



Tax-deductible contributions by check are to be made payable to the **CHSC**. Write **Anderson #0118** on the memo line.

Mail to CHSC – PO Box 132 – Fruitvale, TX 75127. Give online via CHSC at www.che4a.org (3% fee) or TDF (0% fee)

Betrayed and Bereft

What happens when someone you trusted is found to be a deceiver? Many people are troubled and saddened by the recent, tragic, and posthumous confirmations that [Ravi Zacharias](#), a prominent Christian apologist, was involved in [sexual sin](#) for over a decade. The man who brilliantly defended the Gospel worldwide and encouraged us was himself trapped within a sinful lifestyle. Will the preyed upon victims receive justice? How many of the donated gifts were spent to keep victims from exposing him? To fund his lusts? How does his family's faith hold up? What [doubts will arise](#) for the people saved under his ministry? Does this revelation [dismiss all he shared](#) as a lie? [All truth is God's](#). [Trust betrayal](#) like this causes grief akin to a family death.

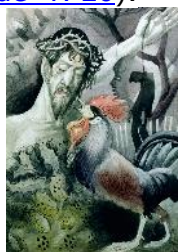
Watchful and Warned

What happens when someone you trusted is found to be a deceiver? Hopefully, all of us realize that we could be that fraud. In fact, we are that fraud every time we do not confess falling short of our professed Biblical beliefs. Perhaps our demise might come from a different sin, but it always comes without daily obedience to Jesus and trusting Him to **keep us from falling** ([Jude v. 24](#)). All it takes is repeating a lie until we believe it is true:

- *I deserve a spouse who meets my needs;*
- *This secret sin does not hurt anyone;*
- *My reputation must be preserved at all costs;*
- *I am too spiritually mature to need accountability;*
- *It is nobody's business how I spend ministry funds;*
- *There is no victory for my addiction;*
- *My work is so vital to the Lord, He will overlook my sinful choices.*

We give thanks for participating in the CHSC that strives to model fiscal transparency and encourages missionaries to have accountability partners. Much time, money, and effort get expended for members' spiritual, physical, and emotional well-being. However, no organization or missionary is perfect. Please know that we invite inquiries and concerns. Contact us if you have unease. Let us **build ourselves and each other up in our most holy faith** ([Jude v. 20](#)).

There are ways to be discerning, testers of spirits ([1 Jn 4:1-6](#); [1 Cor. 12:10](#); [Heb. 5:14](#)). Beware of individuals and organizations that are not vigorously transparent in lifestyle or finances. Be servant-leaders who recognize faults and confess sins. Keep faith by participating in groups like Discovery Bible Studies (DBS), where the norm is to accept queries about personal habits. **Pull some from the fire** ([Jude v. 23](#)) by warning them of the consequences of sin, and, so help keep yourself honest. Repent to obey every day. Remember, King Jesus is the only One who never disappoints us.



The Betrayal by
Osmund Caine

Prayer & Praise

- ☞ Pray for leaders. The enemy likes to see heads of households fall because damage to the Gospel increases. Pray recognized Christian leaders rightly perceive themselves in communion.
- ☞ Pray that our relationship as a couple represents our King well in this life.
- ☞ We appreciate dear ministry partners who visited us in Cookeville this week. They brought items that can support CHE (Community Health Evangelism) efforts.

Your partners in the Gospel,
Verlin & Debbie

Last update: [Snow Struck – 210220.PDF](#)
Prior videos: [Work, Watch, Wait](#) [Belief Trap](#)
2020 Q4 Report: [Authorized Again \(AA\) - 4Q 2020 Report 210213 PDF](#)

2020 Budget: [CHSC-0118 ANDERSON-Budget 2020](#)
Support these ministries: www.che4a.org
Something to ask? Write: updates@verlindeb.org
AWA represents [Andersons Witnessing in Africa](#)